



ENERGY  
INFRASTRUCTURE  
MINING & METALS  
NUCLEAR, SECURITY  
& ENVIRONMENTAL

Presentation to:



2022  
INTERNATIONAL ENERGY  
CONFERENCE & EXPO  
GUYANA

# Energy Transition

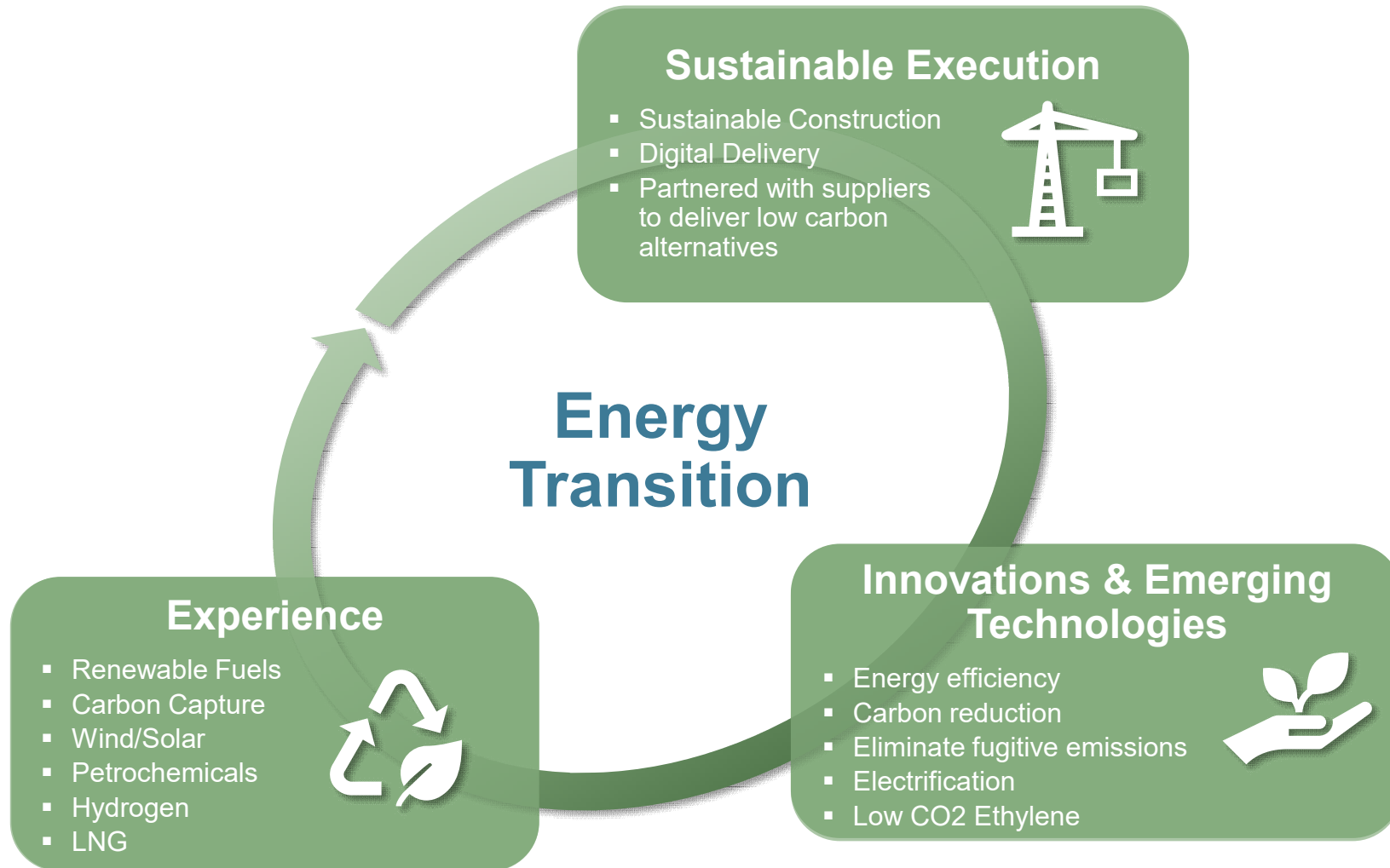
17<sup>th</sup> February 2022

Sherman CCGT  
Texas, USA

We have recently performed a comprehensive FEED study for the US Department of Energy to add a carbon capture and compression plant to Panda Energy Fund's existing CCGT power plant at Sherman, Texas.



# Bechtel's Holistic Approach to the Energy Transition



“We are deploying innovations to **decarbonize each phase of our project delivery to remove embodied carbon**, and we are applying new technologies to **decarbonize the assets we are building**, with Bechtel’s strong history of sustainability as a foundation.”



# Guyana's Low-Carbon Development Strategy 2030



## Hydrogen

Zero-emission fuel on a massive scale



## Energy Technologies & Solutions

Helping customers accelerate their path to net zero



## Renewables

Cleaner energy for a cleaner future



## Transmission & Storage

Helping customers meet energy supply and demand

## Create New Incentives for a Low-Carbon Economy

### Sustainability Planning

- Forestry
- Biodiversity
- Water Resources
- Ocean/Marine Resources

## Protect against Climate Change and Biodiversity Loss

### Climate Adaptation and Resilience

- Climate Resilient Agriculture
- Climate Risk Assessment & Insurance
- Coastal Infrastructure
- Mangroves Restoration and Expansion
- Drought and Flood Management



## Emissions Retrofits

Increasing performance, decreasing emissions



## Advanced Fuels

Converting natural gas facilities to process advanced renewable fuels; creating advanced fuels



## Stimulate Future Growth: Clean Energy and Low-carbon Development

### Green Jobs and Sustainable Livelihoods

- Clean and Renewable Energy
- Ocean Economy Opportunities
- Digital Infrastructure
- Low-carbon Transportation

## Align with Global Climate and Biodiversity Goals

- UN Sustainable Development Goals
  - Nationally Determined Contributions
- Aichi Targets on Protected Areas
  - Leaders Pledge for Nature
  - UN: Net Zero by 2050



## Combined Cycle

Building a bridge to clean energy



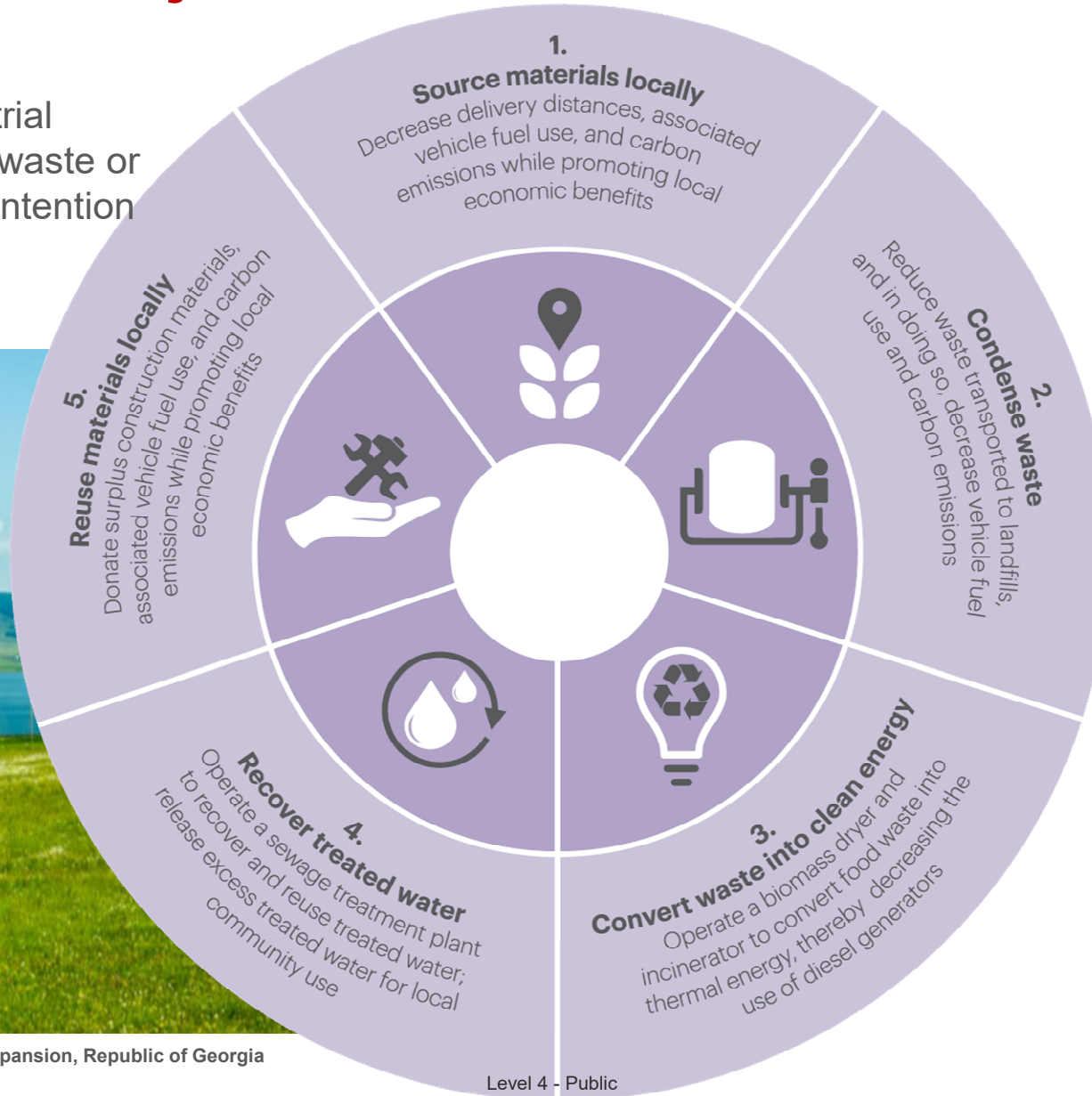
## Carbon Capture

Enabling the energy transition



# Circular Project Economies

A circular economy is an industrial system that produces little to no waste or greenhouse gases by design or intention



## SCPX Circular Economy & Impact



### FUEL:

Saved an average of 371,316 gallons (1.4 million liters) per year, which equates to removing nearly 700 cars from the road



### CARBON EMISSIONS:

Prevented an average of 3,300 metric tons of emissions per year



### WATER:

Conserved an average of 100,000 gallons (378,541 liters) a year, enough to fill 1 million 12-ounce (.35-liter) water bottles



### FOOD WASTE:

Reduced 90 percent (990 kg/work day), equal to about 730,000 pounds, or 365 tons, of waste on average per year



### CONSTRUCTION WASTE:

Recovered, reused, and recycled 40 percent annually


# About Bechtel


Our customers are setting ambitious decarbonization targets. We share this commitment and welcome the challenge. Bechtel is proud to partner with you to create the future of energy.

**+120** years of Experience

**World's First**   
Gas to Gasoline Project


**+400** CCGT  
Power plants constructed

Over **380**   
Major chemical and petrochemical projects

Over **110**   
Gas-processing plants

World renowned experts, focused on the energy transition



Over **143K**   
Megawatts Renewable & Thermal over 320 plants



**Thank you**