



ENERGY  
INFRASTRUCTURE  
MINING & METALS  
NUCLEAR, SECURITY  
& ENVIRONMENTAL

# Bechtel Report 2021

## Partners in Progress





# Partners in progress

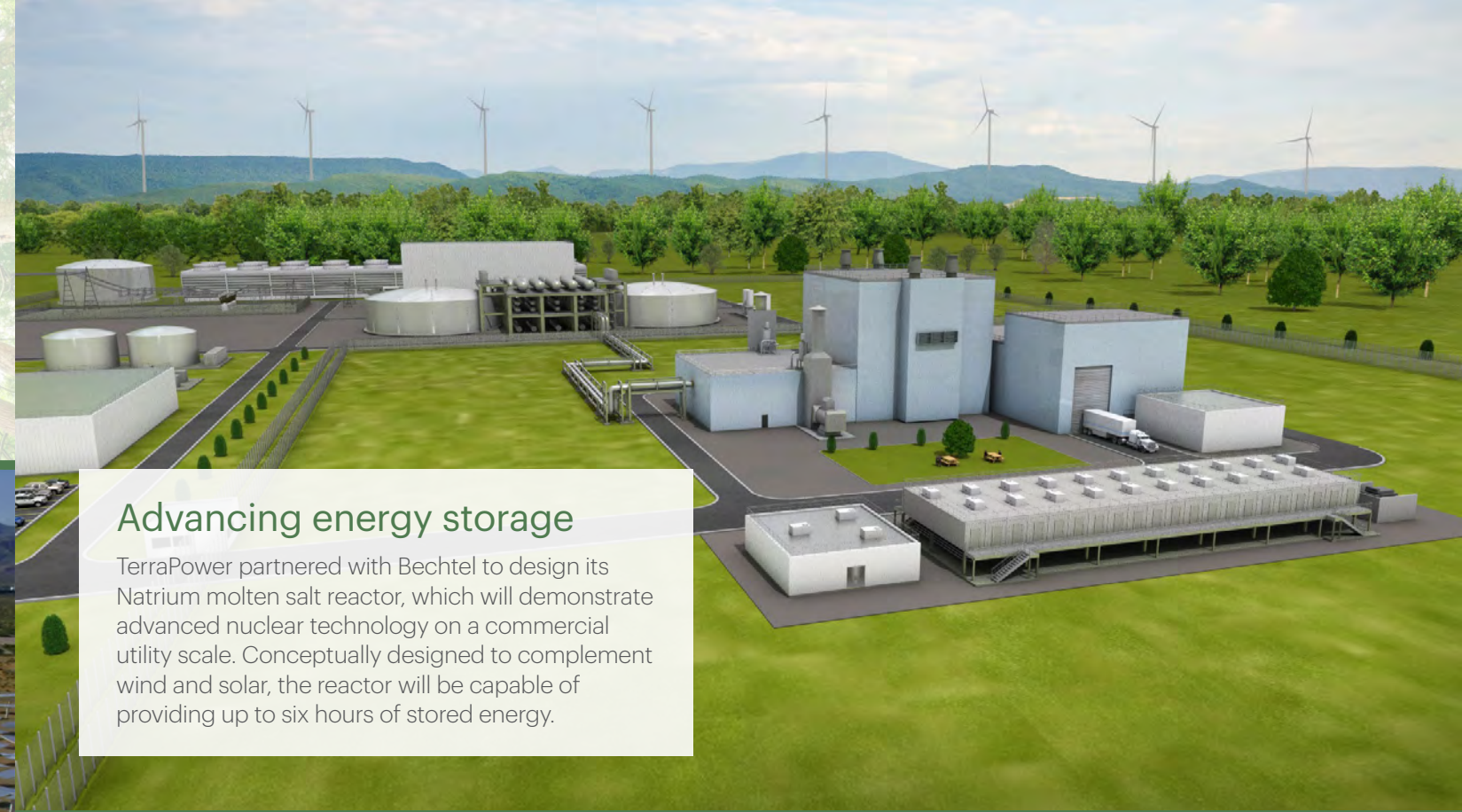
We are proud that the projects we won, advanced, or completed in 2021 are accelerating progress toward a safer, cleaner, more equitable, and more prosperous future. In 2022 and beyond, it's our goal to continue building on our commitment to partnership, intent on being customers' preferred provider for their most critical capital project and asset management ambitions.





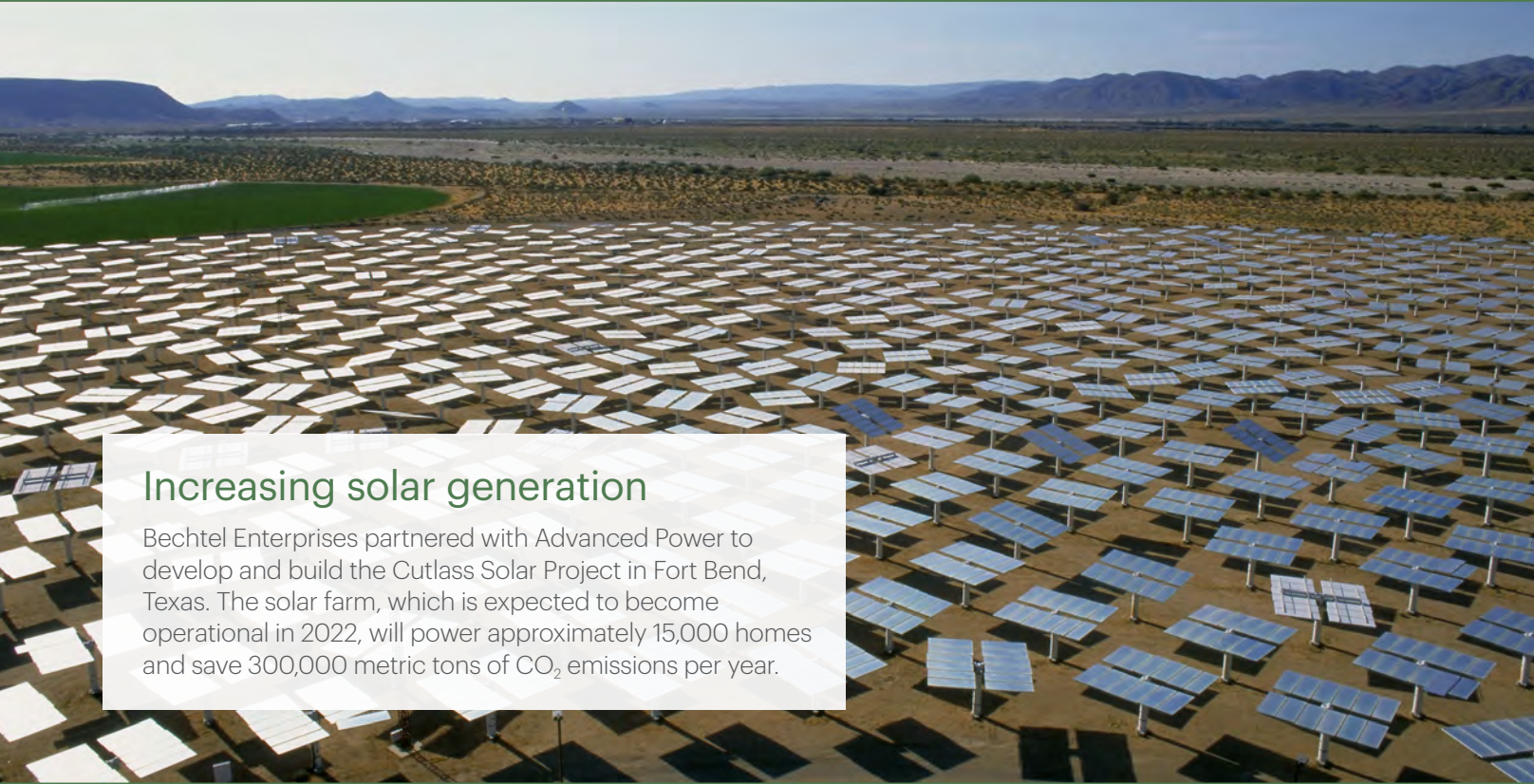
# Building pathways to net zero

We're helping our partners deliver projects that increase energy security, advance decarbonization targets, and drive toward a net zero future.



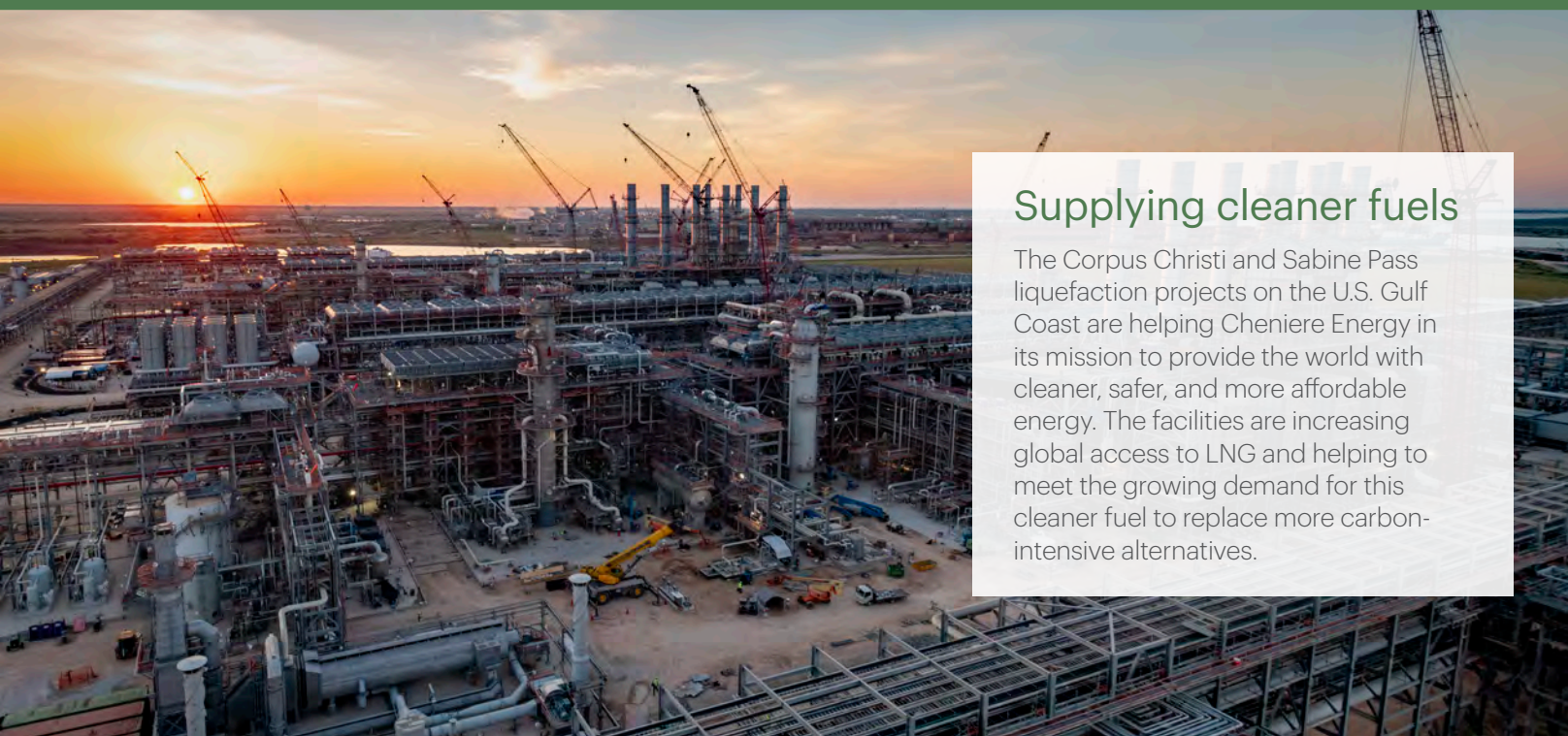
## Advancing energy storage

TerraPower partnered with Bechtel to design its Natrium molten salt reactor, which will demonstrate advanced nuclear technology on a commercial utility scale. Conceptually designed to complement wind and solar, the reactor will be capable of providing up to six hours of stored energy.



## Increasing solar generation

Bechtel Enterprises partnered with Advanced Power to develop and build the Cutlass Solar Project in Fort Bend, Texas. The solar farm, which is expected to become operational in 2022, will power approximately 15,000 homes and save 300,000 metric tons of CO<sub>2</sub> emissions per year.



## Supplying cleaner fuels

The Corpus Christi and Sabine Pass liquefaction projects on the U.S. Gulf Coast are helping Cheniere Energy in its mission to provide the world with cleaner, safer, and more affordable energy. The facilities are increasing global access to LNG and helping to meet the growing demand for this cleaner fuel to replace more carbon-intensive alternatives.



## Reducing CO<sub>2</sub> emissions

In an effort to reduce Ireland's CO<sub>2</sub> emissions, Ervia hired Bechtel and RPS Group to study the key infrastructure required at Cork Harbor and Dublin Port for carbon capture and storage facilities and a central processing facility for liquefaction, storage, and export of CO<sub>2</sub> overseas.



# Creating access & opportunity

Our customers are connecting communities, supporting economic growth, and expanding the supplies of vital resources to build a better world for future generations.

## Boosting economies

As one of the largest points of entry to Australia, with a capacity of 10 million passengers per year, Western Sydney Airport (WSA) will be a catalyst for regional economic development. It will be a world-leading, full-service airport, built for international, domestic, and freight flights, and its sustainable design will leave minimal impact on the environment.



## Transforming London rail transport

When Crossrail commences passenger services in 2022, it will transform rail transport across London, increasing capacity by 10% and adding 42 kilometers of tunnels with eight new stations under Central London. The project will support regeneration across the capital and add an estimated £42 billion to the U.K. economy.



## World-scale manufacturing

Bechtel is serving as the main contractor for Shell's Pennsylvania Petrochemicals Complex, one of the largest construction projects in the U.S. The complex will produce 1.6 million metric tons of polyethylene per year for use in manufacturing a wide range of everyday products from packaging and containers to automotive components.



## Closing the digital divide

Nautilus Data Technologies partnered with Bechtel to transform the environmental footprint of data centers and close the digital divide. The partnership will deploy Nautilus' technology worldwide, enabling widespread access to high-performance computing that is increasingly vital in smart cities, transportation, telemedicine, public health, and security solutions.





# Protecting people & the planet

Our partners are making the world a cleaner and safer place by developing projects that are protecting critical infrastructure and supporting security interests, environmental clean-up initiatives, and demilitarization.

## Decarbonizing infrastructure

CleanBuild, a strategic carbon assessment platform proprietary to Bechtel, calculates the cost and impact of execution strategies that reduce carbon, water use, and waste. Whether retrofitting existing facilities or in the early concept phase for new facilities, customers can use CleanBuild to predict and track emissions in their plant operations and accurately estimate the return on investment for reduction strategies.



## Modernizing the U.S. Navy

The U.S. Navy is modernizing the dry docks and shipyard infrastructure at Pearl Harbor in Hawaii and Puget Sound in Washington state. Bechtel is one of five teams chosen by the Navy to compete for work constructing the new facilities. The rebuild will drive new capabilities in support of the country's fleet of nuclear submarines and aircraft carriers.



## Building a more resilient world

After launching in 2020, bechtel.org partnered with the Peruvian government to help address a long-standing climate and health crisis affecting indigenous Peruvians living in the remote Andean mountains. For its first project, Sumaq Wasi, bechtel.org is developing a solar harvesting technology to deliver 30,000 heated homes.



## Transforming contaminated legacies

One of Europe's most hazardous buildings, the Sellafield Pile Fuel Cladding Silo stores radioactive waste from some of the U.K.'s earliest nuclear reactors. A Bechtel-led joint venture designed, built, and installed remote-operated equipment to retrieve and dispose of waste from the silo's first compartment and was awarded a contract extension for the other five compartments.





# Accelerating progress & innovation

Our partners are helping solve some of the world's greatest challenges, from advanced nuclear research to national security to decarbonization. We're helping them deliver their visions and explore new frontiers of innovation.

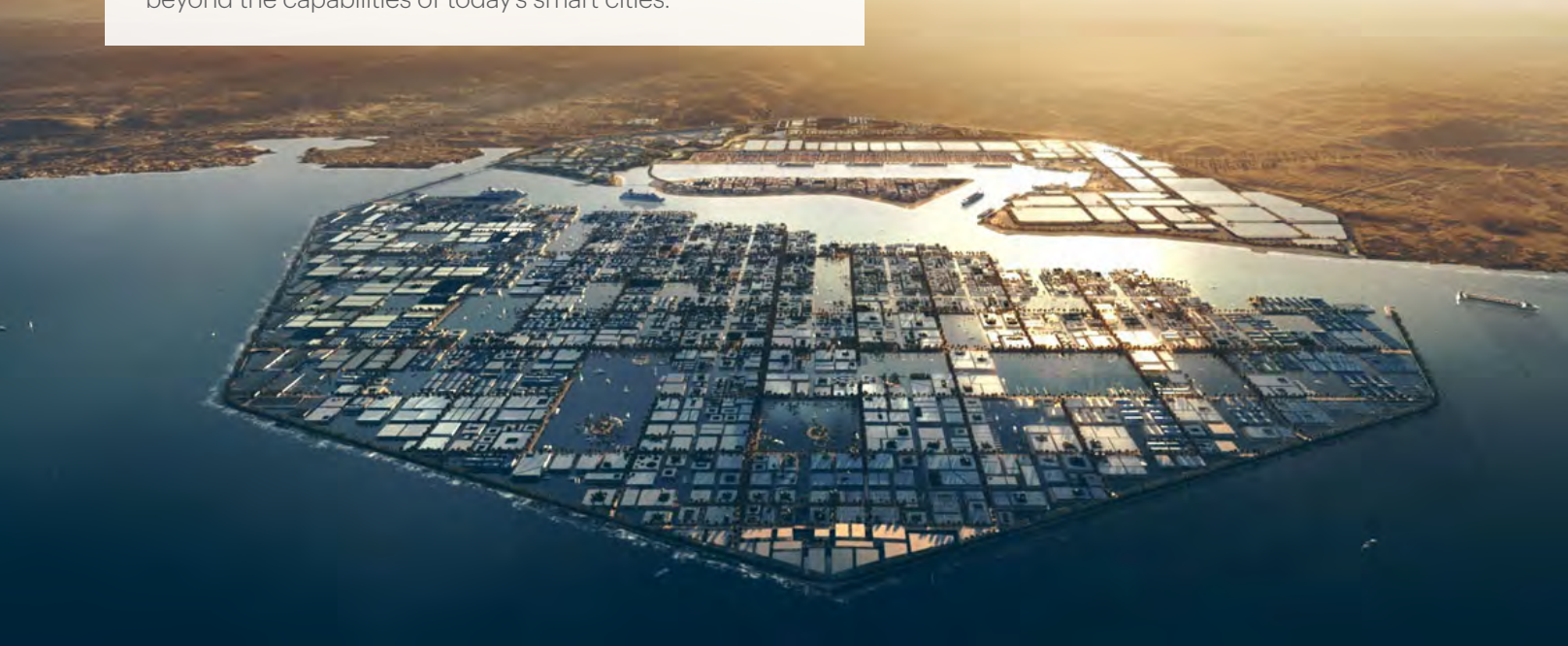


## Advancing scientific breakthroughs

The Lawrence Livermore U.S. National Laboratory, managed by Bechtel and the University of California, is a world-leading institution for scientific innovation. In 2021, the lab's researchers reached the threshold of fusion ignition—a historic step forward for fusion research that also supports the country's nuclear security capabilities.

## Redefining what's possible

Saudi Arabia's NEOM is a next-generation city and beacon for the future of urban living. By integrating sustainable land use, intelligent urban design, and multi-modal mobility, NEOM will deliver a community of exceptional livability far beyond the capabilities of today's smart cities.



## Strengthening national security

Arnold Air Force Base is strengthening the national security of the U.S. and its allies through research and development of hypersonic missiles. Bechtel is helping deliver a hypersonic test facility, known as Project Phoenix. The project reached a major milestone at the end of 2021 with a critical upgrade to an existing Arnold Engineering Development Complex facility.

## Accelerating a clean energy future

As Houston's first climate-tech startup incubator and the largest climate-tech startup in North America, Greentown Labs is bridging industries and entrepreneurs to create a decarbonized future. Bechtel has partnered with Greentown Houston to seek effective methods of transitioning to alternative fuels and accelerate the path to net zero.







[bechtel.com](http://bechtel.com)